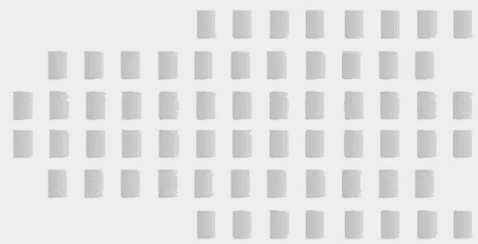
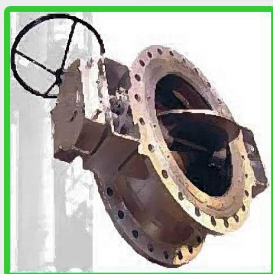
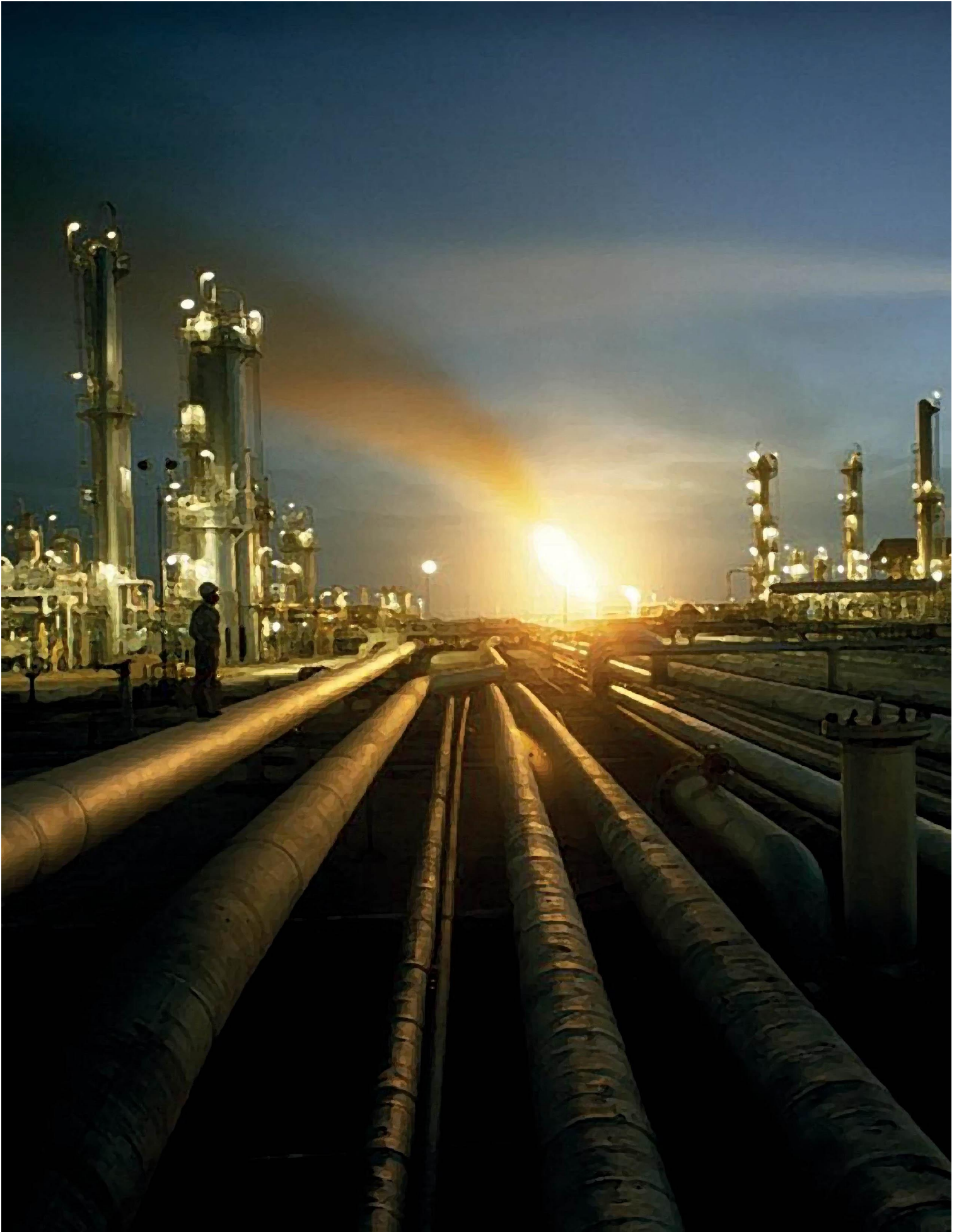
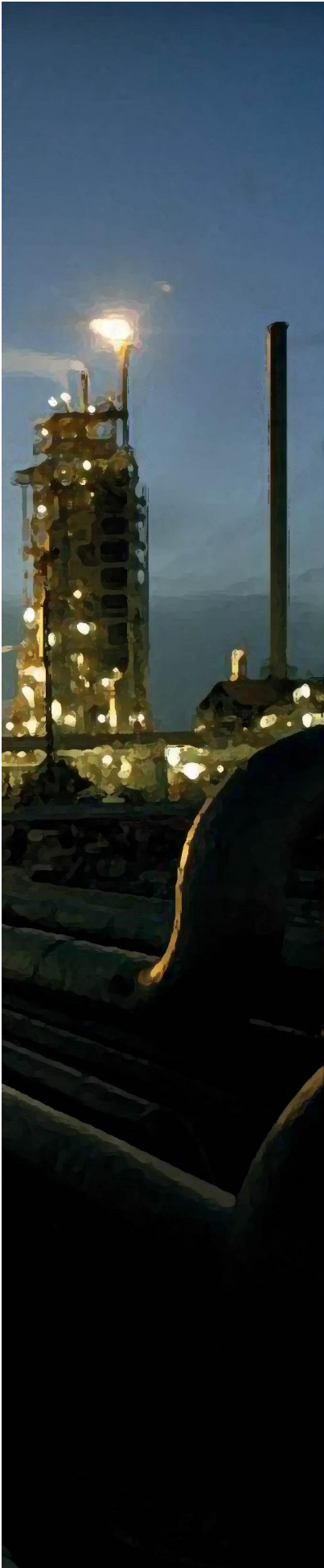


COMPANY PROFILE



valtorque
HOUSE OF VALVES





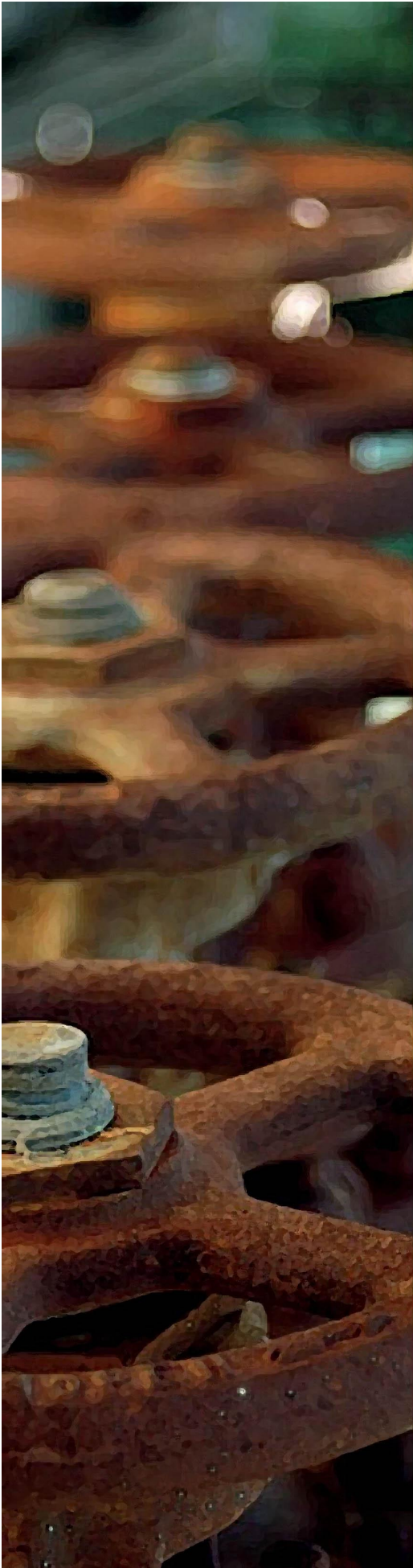
INTRODUCTION

VALTORQUE take this opportunity to introduce ourselves as one of the leading dealers of quality VALVES and PIPE FITTINGS products conforming to international standards. With the history of new product development and innovation that dated back to the company's inception in 1999.

VALTORQUE group has been providing its product in a brand range of material, sizes and pressure classes focused on various industry sectors like Petro Chemical Industries, Oil and Gas industries, Water and Sewage Network Lines, Petroleum Refinery, Food and Pharmacy Industries. We now have become one of the well-known dealers and re-exporters of comprehensive range of Valves, Valves Fittings, Pneumatic Actuators, Electrical Actuators, Flow Meters, Pipe Fittings and Instrumental Equipment. Procured from reliable vendors of the industry, these are appreciated among clients for their attributes which include long functional life, precision engineering, dimensional accuracy and leak-proof. Known for distinctive features, these Valves are widely used in various Infrastructural Projects and Industries.

Our organization ensures its clients with quality range of Valves and its components which conforms to international quality standards. We are backed by rich vendors base that enable us to provide quality Valves. Our vendors ensure that the entire range is produced with innovative techniques of production using premium grade raw material. Apart from this, we are backed by R&D unit, warehousing & packing unit and quality unit. These units are managed by team of experienced professionals who strive hard to provide quality Valves to clients.





We have a wide distribution network that has enabled us to carve a niche among clients and ensuring clients the timely delivery of products at competitive prices.

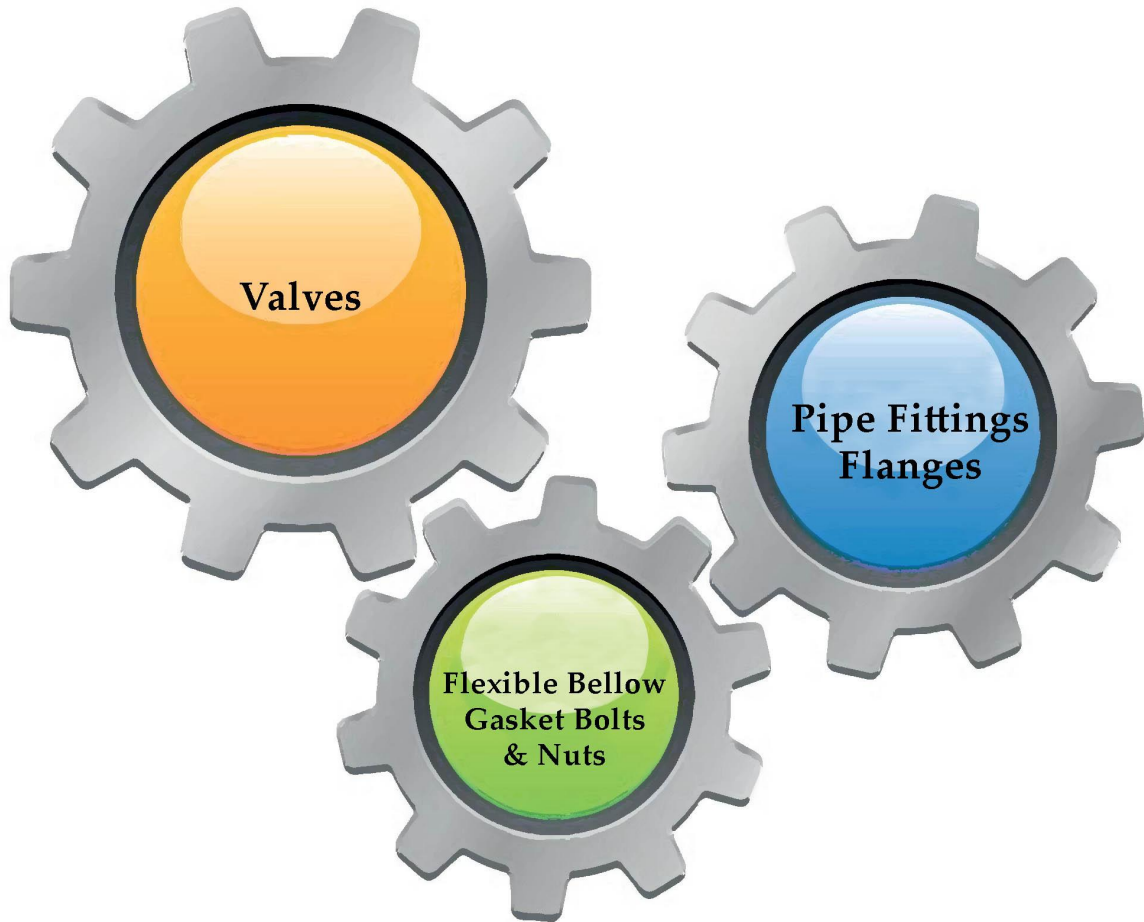
Under the able guidance of our mentor, we are able to cater huge client-base by fulfilling their exact requirements. He always motivates us to attain maximum client satisfaction by providing quality range of Valves.

VALTORQUE's highly engineered product solution is widely specified and used throughout the MENA region.

To achieve our mission:

- > We put our customers first and we provide the highest standards of quality to ensure the highest level of satisfaction.
- > We foster a leadership style, throughout the company, which encourages respect for individuals, teamwork and commitment to quality.
- > We continuously follow technological developments to introduce the best possible products to suit our customers' needs.
- > We share in the responsibility to satisfy business objectives but we never sacrifice our ethics and integrity.

MARKET SECTORS



OIL & GAS

HVAC

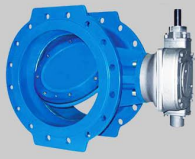
MARINE and INDUSTRY

WATER WORKS

PROCESS

WATER VALVES

Butterfly Valves (BVF) Flange Type (BVF)



**Butterfly Valves
Double Flange Type**
DN 10-3000 mm
PN 6-40 bar
ANSI Class 150 & 300



**Butterfly Valves
Double Flange Type
with Electrical Actuator**
DN 10-3000 mm
PN 6-40 bar
ANSI Class 150 & 300

Gate Valves (GV)



**Gate Valves
Soft Sealing Type
with Handwheel**
DN 50-400 mm
PN 10-16 bar
ANSI Class 150



**Gate Valves
Soft Sealing Type
with Electrical Actuator**
DN 50-400 mm
PN 10-16 bar
ANSI Class 150



**Gate Valves
Metal Sealing Type**
DN 50-300 mm
PN 10-25 bar
ANSI Class 150

Automatic Control Valves (CV)



Pressure Reducing Valves
DN 50-1000 mm
PN 10-40 bar
ANSI Class 150 & 300



**Pressure Reducing &
Flow Control Valves**
DN 50-1000 mm
PN 10-40 bar
ANSI Class 150 & 300



**Excess Flow
Shut Off Valves**
DN 50-1000 mm
PN 10-40 bar
ANSI Class 150 & 300



**Modulating or On/Off
Float Control Valves**
DN 50-1000 mm
PN 10-40 bar
ANSI Class 150 & 300

Air Valves (AV)



**Single Chamber - Double Orifice
Triple Function Air Valves**
DN 50-200 mm
PN 10-40 bar
ANSI Class 150 & 300



Air Valves for Sewage
DN 50-200 mm
PN 10-16 bar
ANSI Class 150

Non-Return Valves (NRV)



**Tilting Disk Check Valves
with Counter Weight**
DN 50-1800 mm
PN 10-40 bar
ANSI Class 150 & 300



Swing Check Valves
DN 50-300 mm
PN 10-16 bar
ANSI Class 150 & 300

Butterfly Valves Wafer Type (BVW)



**Butterfly Valves
Wafer Type**
DN 50-200 mm
PN 6-16 bar
ANSI Class 150



**Butterfly Valves
Wafer Type
with Gearbox**
DN 50-600 mm
PN 6-16 bar
ANSI Class 150



**Butterfly Valves
Wafer Type
with Electrical Actuator**
DN 50-600 mm
PN 6-16 bar
ANSI Class 150



**Butterfly Valves
Wafer Type
with Pneumatic Actuator**
DN 50-600 mm
PN 6-16 bar
ANSI Class 150



**Butterfly Valves
Lug Type**
DN 50-600 mm
PN 6-16 bar
ANSI Class 150



**Butterfly Valves
Double Flange Type
Short Body**
DN 500-1200 mm
PN 6-16 bar
ANSI Class 150

Strainers (STR)



T Strainers
DN 350-1600 mm
PN 10-40 bar
ANSI Class 150 & 300



Y Strainers
DN 50-300 mm
PN 10-40 bar
ANSI Class 150 & 300

ACTUATORS



Pneumatic Actuators
Torque: 10-7800 N.m.

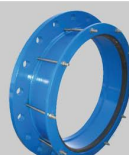


Electrical Actuators
Torque: 0-450 N.m
Source: 380 VAC 1/3 Phase 50 Hz

Accessories



Dismantling Joints
DN 100-3000 mm
PN 10-40 bar
ANSI Class 150



Flange Adaptor
DN 100-3000 mm
PN 10-40 bar
ANSI Class 150

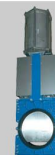


Rubber Expansion Bellow
DN 15-1000 mm
PN 10-25 bar
ANSI Class 150 & 300

Penstock / Knife Valves



Penstock



Knife Gate Valve
DN 50-600 mm
PN 6-10 bar
Flanged/Water/Lug Type

OIL & GAS VALVES

TRUNNION BALL VALVES

API 6D, API 6A, API 6FA, API 607



Size: 2" - 36"
 Rating: 150lb, 300lb, 900lb, 1500lb, 500psi
 Materials: A105N, LF2, F316, Alloy
 Configuration: 2-Piece or 3-Piece Bolted Body
 Applications: Oil & Gas Production, Waste Water, Jet Fuel Service
 Natural Gas Pipeline, Gas Distribution, On/Off shore

Fire safe tested & certified / double block & bleed / sealant injection / anti-static / optional double piston design

FLOATING BALL VALVES

API 6D, API 608, API 6FA, API 607, JIS, KS



Size: 1" - 10"
 Rating: 150lb, 300lb, 600lb
 Materials: WCB, LCB, LCC, CF8, CF8M, ALLOY
 Configuration: Unibody or Split Body
 Applications: Chemical, Petrochemical, Oil & Gas, Pulp & Paper

Fire safe tested & certified / blowout-proof stem / anti-static / double sealing design

GATE, GLOBE, SWING CHECK & TILTING DISC CHECK VALVES

API 6D, API 600, API 603, JIS, KS



Size: 2" - 24"
 Rating: 150lb, 300lb, 600lb
 Materials: WCB, WC6, WC9, LCB, LLC, CF8, CF8M, ALLOY
 Applications: Petroleum, Petrochemical, Chemical, Water/Sewage
 Electric Power, Heat Power

TRIPLE CENTRIC AND HIGH PERFORMANCE BUTTERFLY VALVES FLANGED / WAFER / LUG

API 609, ISO 5752, MSS-SP-68, JIS F7480, JISB2032, KSV 7490



Size: 2" - 120"
 Rating: Class 150lb, 300lb, 600lb, 900lb, 1500lb, 2500lb
 Materials: WCB, CF8, Ni Al Bronze
 Applications: Petroleum, Petrochemical, Chemical, Water/Sewage

THREADED & SOCKET WELDED BALL VALVES

ANSI, JIS, KS



Size: 1/2" - 2"
 Rating: 1000 wog
 Materials: CF8, CF8M, A105, LF2, F304, F316
 Applications: Petroleum, Petrochemical, Natural Gas,
 Electric Power, Sanitary Service

Actuators for automatic operation can be supplied



WE ARE GOING



WORLDWIDE



valtorque
HOUSE OF VALVES

HEAD OFFICE

Valtorque Valves Trading LLC

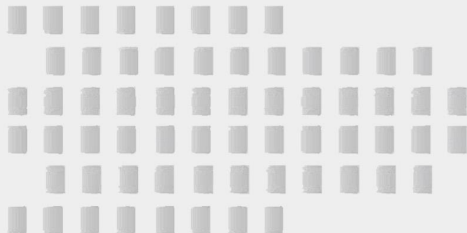
P.O. Box 1750

Dubai, United Arab Emirates

Tel. No.: +971 4 4417081

Fax No.: +971 4 4417087

Email: sales@valtorquegroup.com



valtorquegroup.com